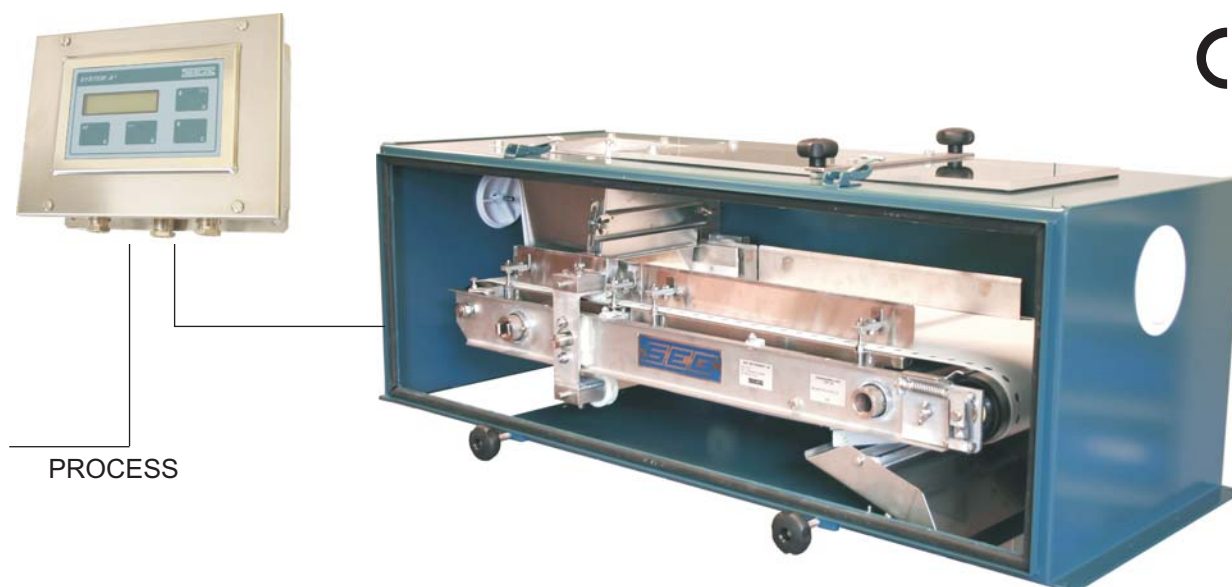




WEIGH FEEDER FK-3

WEIGH FEEDER FOR FLOW CONTROL



- Feed out and flow rate control of granules or powder from storage bins, silo's and other containers to process systems.
- Capacity from 50 to 5000 litres/hour.
- Stand alone or PC-surveillance for flow control or ratio control when using **S-E-G** belt weighing instruments.
- Unique design giving high accuracy with easy cleaning and maintenance.
- Enclosed versions and stainless steel versions as options.

The feeder operates according to a revolutionary principle. The material is pulled out of the hopper and pushed over the weighing area. The drive consists of two teathed wheels placed between the hopper and the weigh area.

The wheels drive the conveyor through slots in the belt, ensuring minimal tension at the weigh area and preventing sideways movement of the belt, eliminating most of the possible weighing errors.

GENERAL DATA

Belt width:	Effective: 260mm.
Belt type:	Polyester fibre with PVC or urethane layer. Food quality.
Load sensor:	S-E-G loadcell KN-10 IP 67 (To be ordered separately, see spec. F31-16E).
Belt speed sensor:	S-E-G tachometer type F.
Belt cleaning:	Plow scraper on both sides of belt at the feed end.
Maintenance: maintenance.	The feeder is placed on slide rails to enable it to be easily removed for
Drive:	3PH 220/380 V 120 W, IP54, spur gear.

S-E-G INSTRUMENT AB

Box 111 43, S-161 11 Bromma, SWEDEN
 Phone: (+46) 8 7647400 Fax: (+46) 8 7647500 Internet: www.s-e-g.com
 VAT: SE556186188001

CAPACITY AND CONTROL RANGE

Capacity	min.	kg/h	50
	max	kg/h	3000
		lit/h	5000
Control range	1:20		

These limits are for guidance only. Limits depend on the material specifications.

DESIGNATION

FK - 3 - - -

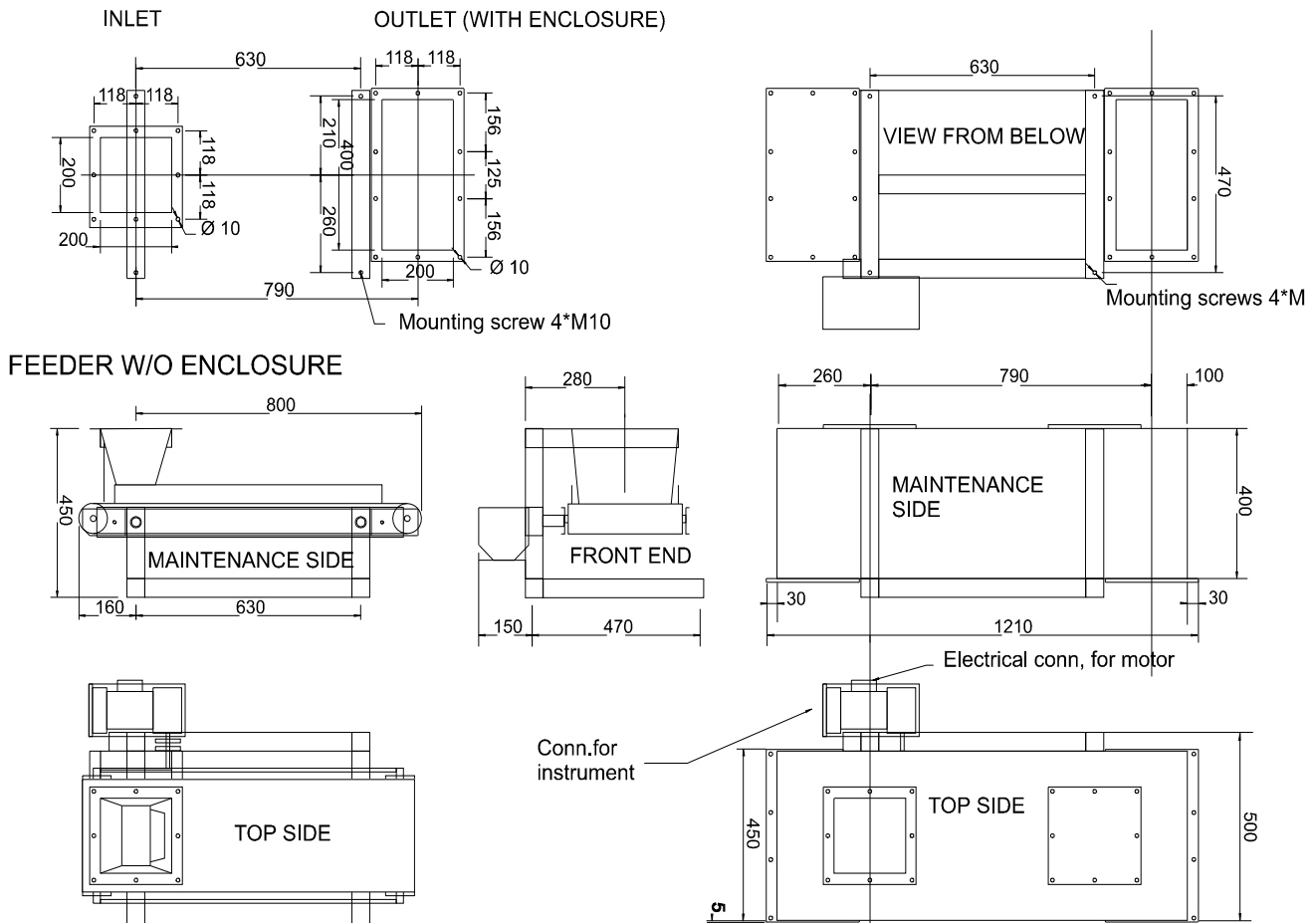
Stainless steel parts / food industry approved nylon are always used for parts in direct contact with the weighed material.

VERSIONS

Mounting version	-V:	Material fed from left to right, viewing from maintenance side.
	-H:	Material fed from right to left, viewing from maintenance side.
Material and protective coating	-BL:	Steel, blue 2-comp. coating with anodised parts.
	-SS:	Stainless steel, AISI 304.
Enclosure	-00:	Without enclosure.
	-0S:	Without enclosure. With hopper bracket in stainless (for version -BL)
	-L0:	Enclosure with opening door at one side, and window for inspection on top side at feeder front.
	-LS:	Enclosure according to -L0 in stainless steel, AISI 304.

Example: FK - 3 - V - BL - L0

DIMENSIONS



Cut-out according to DIN 24 193-2

